



TUOFANG

FENCING

Welded Wire Mesh Fence

Panel Size

Height (mm)	Width (mm)
1000-3000mm	2000-2500mm

Mesh Size

Wire Diameter (mm)	Mesh Size (mm)
3-8mm	50×100mm
3-8mm	50×150mm
3-8mm	50×200mm

I Square Post

Pipe Size (mm)	Thickness (mm)
50×50mm	1-4mm
60×60mm	1-4mm

II Round Post

Pipe Size (mm)	Thickness (mm)
50×50mm	1-4mm
60×60mm	1-4mm

III Rectangular Post

Pipe Size (mm)	Thickness (mm)
φ 48mm	1-4mm
φ 60mm	1-4mm



Square Post (RHS Post) with welded wire mesh fencing panel is a fence classic which has simple style and flexible installation.

Fence panel is made of high quality low carbon steel galvanized wire.

All the steel work is galvanized and powder coated (RAL colors available), leading to a high quality Appearance and long life.

Application: schools, parks, residential areas and industrial zone..

Clip 1



Clip 2



Clip 3





Peach-Shaped Post

Panel Size

Height (mm)	Width (mm)
1000-3000mm	2000-2500mm

Mesh Size

Wire Diameter (mm)	Mesh Size (mm)
3-8mm	50×100mm
3-8mm	50×150mm
3-8mm	50×200mm

Peach-Shaped Post

Pipe Size (mm)	Thickness (mm)
50×70mm	1-1.2mm
70×100mm	1-1.2mm





PRODUCTS REFERENCE	SIZE		OPENING		WIRE DIA.	SURFACE TREATMENT
	HIGHT (MM)	WIDHT (MM)	V	H		
1	900	2200 OR 2400	50MM	150M M	5MM	HOT DIPPED GALVANIZED
2	1200	2200 OR 2400				
3	1500	2200 OR 2400				
4	1800	2200 OR 2400				
5	2100	2200 OR 2400				
6	2400	2200 OR 2400				
CUSTOMIZED	WE ARE ABLE TO PRODUCE YOUR DESIRED SPECIFICATION					

ROLL TOP FENCE is designed to have a triangular on the top and bottom of the fence which makes it more strong and tough. It prevents people from easily climbing over the fence to reach the protected area.

Surface Treatment: hot dipped galvanized or PVC powder coated supply the fence a lifespan of 30 years more.





Garrison Fencing/Steel Picket Fence

Standard Size

Panel Height (MM)	1800	2100	2400
Panel Width (MM)	2000		2400
Horizontal Rail (MM)	40*40		
Vertical Pickets (MM)	25*25	20*20	
Post Specs (MM)	60*60	60*80	80*80
Post Height(MM)	Match the panel height		

Garrison Fencing is particularly popular for commercial applications as it provides a high level of security at an affordable price. It is made of galvanized steel pipe and then powder coated. The treatment gives the fence extended life period and prevents rusting. Lasting far longer than wire fencing solves the ongoing capital expenses Of wire fence maintenance and replacement.

Maintenance: It doesn't need high maintenance like wood fence, like Painting or staining

Gates

Personal Access Gates-Standard size gate suits 1000mm opening

Vehicle Access Gates--It is available for any opening dimensions.



Chain Link Fencing

Galvanized steel chain link fence fabric is produced in a variety of gauges and mesh sizes, and is produced in heights of 36" , 42" , 48" , 60" , 72" , 84" , 96" , 120" , and 144" .

Color & Size Options

Standard(silver-grey) galvanized finished
 Black vinyl coated + galvanized
 Green vinyl coated + galvanized
 White vinyl coated + galvanized

Available in 3/8", 1/2" 5/8" and 1" mesh

Product Features

15-year and 25-year limited warranties
 Low maintenance
 Residential,commercial,and industrial
 and high security applications
 Matching framework,ittings and gates
 Available



Double Wire Panel Fencing

Panel Dimensions

Heights	630 830 1030 1230 1430 1630 1830
	2030 2230 2430 2630 2830 3030 3230
	3430 3630 3830 4030 4230 4430 4630
	4830 5030 5230 5430 5630 5830 6030
Width	2500
Aperture Size	50×200
Wire Diameter	6/5/6 8/6/8

Surface Treatment

- ◆ Hot dipped galvanized after welded
- ◆ Galvanized and polyester powder coating
- ◆ Standard color is RAL 6005 and RAL 7016
- ◆ Full range of RAL color available



Structure

Standard panels are constructed from a 5mm single vertical wire sandwiched by two 6mm horizontal wires leaving a 200×50mm aperture. They create a strong rigid fence when fitted to RHS post.

Application

Schools Public Buildings Industrial Buildings



Type 1



Type 2



Post Dimensions

RHS	60*40	80*40	
	80*60	100*50	
Thickness	2	2.5	3 mm
Height	1130-7000 mm		

Fittings

Flat clamp bars	40×5mm
Screw	M8×40
Metal clamp is also available	

Surface Treatment

- ◆ Hot dipped galvanized after welded
- ◆ Galvanized and polyester powder coating



358 anti-climb Fencing

'358' comes from its measurements "3" × 0.5" × 8 gauges which equates to approx 76.2mm × 12.7mm × 4mm in metric. Small aperture makes it extremely difficult to use cutting tools or for would-be intruders to climb or pass objects through the fence.

Mesh

Horizontal Wires: 4mm @ 12.7mm centers

Vertical Wires: 4mm @ 76.2mm centers

Mesh Aperture: 76.2mm × 12.7mm

Height: 1.8m, 2.0m, 2.4m, 2.7m, 3m, 4m, 5.2m

Finish: Hot dipped galvanized

Galvanized and polyester powder coated



Post

Dimensions: 60 × 60mm 60 × 80mm 80 × 80mm

Post Centers:

Fittings: steel clamp bar, clamp, screws

Post are designed with additional fixing holes to accommodate stepping of panels to suit uneven ground. All range of RAL colors are available.



Accessories

- Barbed Wire
- Concertina Razor Barbed Wire
- Flat Loop Razor Barbed Wire
- Building Spike Topping

Gate

- Single Gate: 1.2m width
- Double Leaf Gate: 3-8m
- Sliding Gates available

Gate to match fence height
 And customer specifications
 are available and priced
 accordingly.

Applications

- Military sites
- Prisons and correctional facilities
- Warehouses
- Important government buildings
- Residential areas
- Powder plants
- Industrial parks



Temporary Fencing Panel

Temporary Fencing Panel is quick and convenient for a location, festivals, events and job site enclosure. The fence panel is constructed of welded mesh or chain link mesh. Thin mesh design also helps to keep the panel lightweight for easy transportation and storage, whilst also offering effective security once in place.

Features:

Frame constructed of galvanized 32mm steel pipe.
 4mm galvanized wire with 60×150 aperture.
 Fully galvanized weather resistance .



Fence Clamps

It is used to join the fence panel together and attach support stays to the panels.
 Finish: hot dipped galvanized



Standard Dimensions

Panel Height:1800mm
 Panel Length:2400mm
 Plastic Fence Feet Size:
 570×245×130



Crowd Control Barricades

Crowd Barriers are a lightweight and durable fencing system, quick to install. They provide an ideal solution for the safety of pedestrians, protection of property, and wherever temporary boundary solution is required.

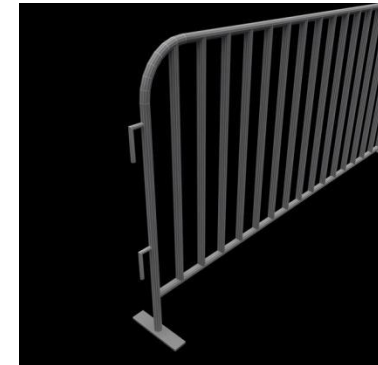
Barriers can be quickly installed through an easy locking system ensuring a safe and secure temporary boundary.

- Frame: 1-1/2" OD 16 gauge steel tubing
- Uprights: 1/2" OD 16 gauge steel tubing
- 1-1/4" OD 16 gauge steel tubing
- 5/8" OD 18 gauge steel tubing
- Spacing between uprights: 4"
- Length: 3.25' 6.5' 8'
- Height: 43"



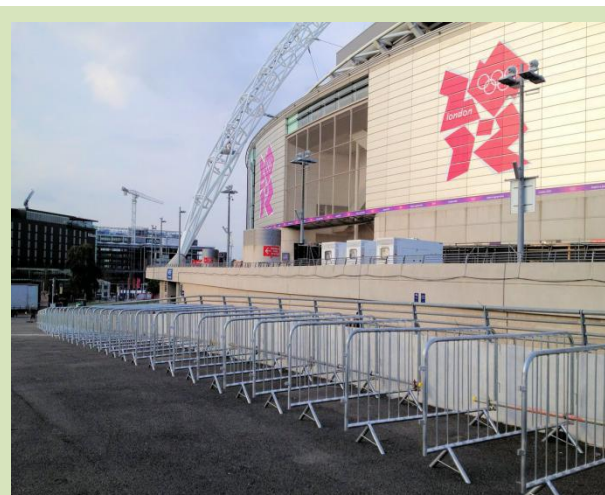
Key Features

- Easy to transport and install
- Hot dipped galvanized
- Interlocking system
- Stacks compactly for storage
- Easily transportable



Base Type:

- Flat Base Bridge Base
- "U" Base Wheel Base



Gabion Baskets

Gabions are rectangular wire mesh baskets filled with rock at the project site to form flexible, permeable, monolithic structures such as retaining walls for commercial, industrial and road projects. They are also used for erosion control, bank stabilization, channel linings, and weirs.

Gabion strength comes from a double twisted hexagonal mesh of steel wire(2.7mm) which is reinforced by selvedges of heavier wire(3.4mm) running along the edges and by transverse diaphragms. The double twisted woven wire will not unravel, even when cut.

The mesh is manufactured with Class A galvanized wire or with PVC coating wire, with mesh aperture of 80×100mm.



River Mattresses - Manufactured using hexagonal woven mesh type, Class A Galvanized or with a 0.50mm thickness PVC coating, mesh aperture 60 x 80mm, mesh wire diameter of 2.20mm and salvage wire diameter of 3.4mm.

Standard Mattresses Dimensions

L (m) × W(m) × H(m)

2×1×0.3 3×1×0.3

6×2×0.23 6×2×0.17



Standard Baskets Dimensions

L (m) × W(m) × H(m)

1×1×1 4×1×1 5×1×1

2×1×1 2×1×0.5 4×1×0.5



3×1×1 3×1×0.5 1.5×1×1

Welded Wire Mesh Gabions



Pre-assembled gabions are made of welded wire fabric and have shape control that is far superior to that achieved with other types of baskets. The fabric used in these baskets is identical to the mesh used to reinforce concrete flatwork. The improved finished shape of welded wire mesh gabions produces a more pleasing appearance. In addition, gabions install at a considerably faster rate than woven wire baskets. Studies have shown that welded wire baskets install at a rate that reduces labor costs by at least 50%.

Gabion boxes and Mattresses are made from 76.2mm x 76.2mm nominal (3" x 3") Welded Mesh, divided by diaphragms at 1 metre centres where necessary with wire diameters 3mm, 4mm or 5mm.

3mm diameter wire is used on lower retaining walls, 4mm diameter wire on medium to high retaining walls and the heaviest 5mm wire for the highest structures



Palisade Fencing



For many years now Palisade fencing has been the mainstay of industrial security fencing, and is widely considered to be the most effective form of industrial security fence. It forms an effective and economic barrier to deter intruders. It is constructed from vertical strips of corrugated steel, called PALES, fixed to horizontal rails, of steel angle, by welding (Welded panels), or bolting (Kit-form). When assembled, they are called PANELS. These are fixed to fence posts, which are usually concreted into the ground, or bolted to some existing wall or other hard surface. The PALES usually have triple pointed tops, but can also have round tops. There are two types of PALE, "D" section and "W" section, which describe the shape. "W" section pales are lighter, but wider and are folded ("rolled") into a stronger "W" shape. The "D" section pales have to be made from heavier steel to be equal in strength.

Pale:

Type:	"D" Section	"W" Section
Thickness:	2-4mm	2.5-3.5mm
Height:	1.2m, 1.5m, 1.8m, 2.0m, 2.1m, 2.4m, 2.7m, 3.0m and 3.6m	
Finishing:	galvanized or polymer coated in a variety of different shapes and colours.	

Angle Rail: 45×45mm 50×50mm

RSJ Post: 102×44mm 100×55mm

Applications:

School, Sports Fields,
Commercial/Industrial Premises





TUOFANG Rigid Welded Wire Mesh Fencing Panels offer solutions for all situations, such as garden, zoo, residential protections, and so on. The rigid mesh fencing panels uses hot dipped galvanized steel wire as horizontal and vertical wires. All fence components are coated with polyester powder and all RAL colors is available. You can choose the color by the color of your house. This will make your garden vell good looking.

3 D rigid mesh fencing is the classic style of weld mesh fencings , for its simple design and easy installation. V-pressings along the length of panel make the fence more stronger than even mesh panels.

Panels

Mesh Aperture 50×200mm
 50×150mm
 50×100mm
 Variable

Wire Gauge 4mm 5mm 6mm

Panel Height 900mm-2500mm

Panels Length 2500mm

Post Option over length (drilled in ground)
 Flange plate (bolted connection with reduced shank)

Post

Post Dimention 60×60mm

Post Height Fit for fence panel height

Standard Colors

RAL 9005 (Black)
 RAL 6005 (Dark Green)
 Other RALcolors are availabl
 On request

